

arbour
NATURE ESTATE



LUXURY ROOTED IN NATURE
2 Bedroom Apartments for sale from R2,095 million | 3 Bedroom Houses for sale from R2,895 million | No Transfer Duty



“Our latest development in George, Arbour Nature Estate, is set on a beautiful riverside site, just a stone’s throw from Fancourt Golf Estate. When we identified this great location, we knew we had to do something really special here, and talented architect Robert Silke has helped us design a truly stunning luxury estate.

“Unlike our other developments in George, Arbour Nature Estate offers a choice of houses and apartments, making it a perfect place to live for a wide range of families, as well as an exceptional investment.

For residents, this is an opportunity to escape the hustle and bustle of big city living in an oasis of serenity where they can enjoy lushly landscaped green spaces, river-bank walking trails and wonderful mountain views.

“But there’s something else that sets Arbour Nature Estate apart from every other secure estate in George - its lavish, resort-style Lifestyle Centre. We’ve really pushed beyond the expected here to create a unique community amenity that features a double-storey clubhouse with balconies, lounge areas and hotel-level features like a heated outdoor swimming pool, padel court and an open-air cinema!

“More than just a place to live, Arbour Nature Estate is an embodiment of forward-thinking architecture, urban planning and landscape design. Whether you’re looking for a new home or a hard-working investment with great long-term capital growth prospects, please don’t risk disappointment - these units have been priced to offer buyers incredible value. Don’t miss out!”

John Rabie
Founder & Chairman
of Signatura





arbour
NATURE ESTATE



INVESTMENT

A Unique Opportunity in Booming George

Investing in George's property market presents a wealth of advantages. Located on the captivating Garden Route, George boasts scenic beauty and a multi-faceted economy thanks to its thriving tourism, industrial, and agricultural sectors, ensuring a consistent rental income stream. The town's robust local economy and strategic location also indicate a strong potential for capital appreciation, making it a haven for investors.

High Demand for George Properties

Notably, there is a high demand for properties in the George area, supercharged by the ongoing semigration dynamic, which emphatically underlines its attractiveness as an investment destination. Within this vibrant property landscape, Arbour Nature Estate stands out because of its enviable position, distinctive architecture and unrivalled lifestyle activities.

Competitive Advantages Boost Investment Potential

These competitive advantages, coupled with George's promising future, position Arbour Nature Estate as an ideal choice for savvy property investors seeking to combine scenic splendour with serious investment potential and high-income growth.

DESIGN

Architectural Excellence in a Unique Setting

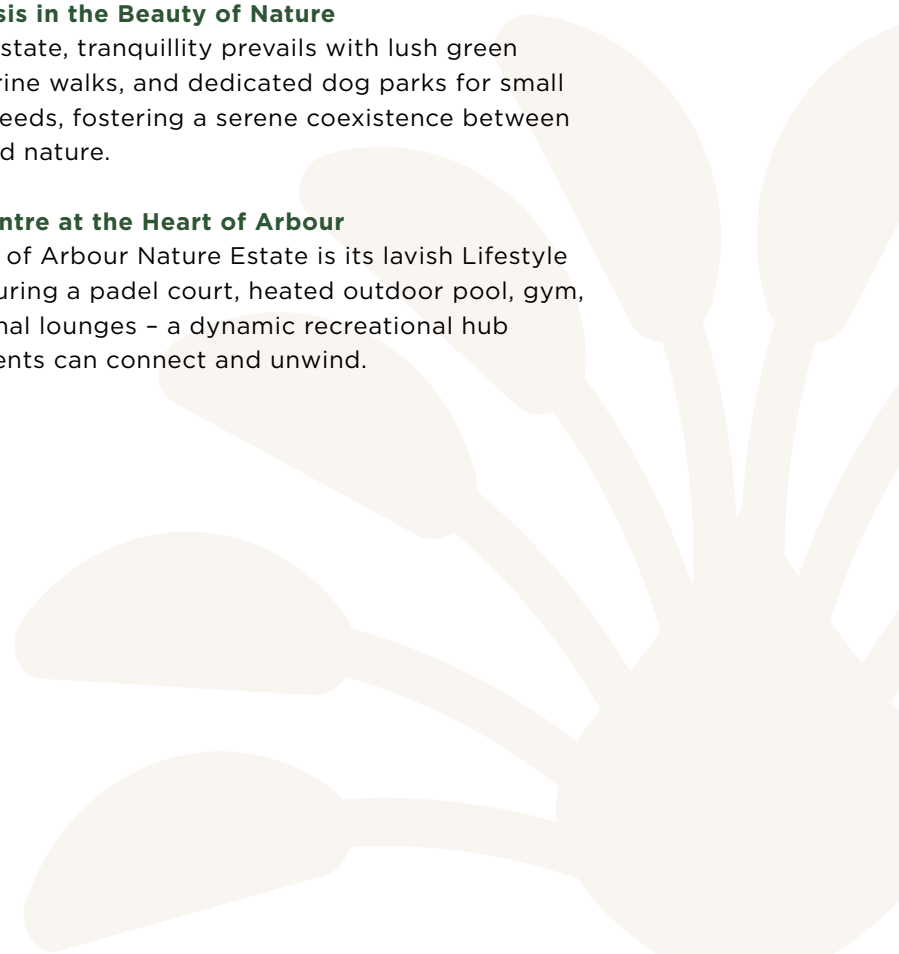
Arbour Nature Estate epitomises innovation and inspired design, harmoniously merging Futurism and Art Deco with Cape Vernacular to create a modern architectural masterpiece that respects the present while pioneering the future.

Tranquil Oasis in the Beauty of Nature

Within the estate, tranquillity prevails with lush green spaces, riverine walks, and dedicated dog parks for small and large breeds, fostering a serene coexistence between residents and nature.

Lifestyle Centre at the Heart of Arbour

At the heart of Arbour Nature Estate is its lavish Lifestyle Centre, featuring a padel court, heated outdoor pool, gym, and communal lounges - a dynamic recreational hub where residents can connect and unwind.





FEATURES

Where Every Amenity Enhances Your Lifestyle

At Arbour Nature Estate, we believe that the essence of luxurious living lies not just in the homes we offer, but in the world of amenities that surround them. Our carefully designed facilities are crafted to enhance every aspect of your lifestyle.

As a resident, you will enjoy access to:

- Lifestyle Centre with gym, heated pool & open-air cinema
- Backup generators for the entire estate
- Glass-walled padel court
- 5-hectare Nature Park on the Malgas River
- Dog parks for both large & small breeds
- On-Site Estate Manager
- 24-hour security & manned Gatehouse
- Secure parking or garaging for two cars per home



LOCATION

Explore the Garden Route from Arbour Nature Estate

Arbour Nature Estate offers the perfect blend of luxury and practicality, conveniently located near the city centre and Fancourt Country Club. Residents will enjoy easy access to a wide range of world-class attractions and facilities.

Local attractions include:

- Views of the majestic Outeniqua Mountains
- Picturesque beaches at Victoria Bay, Plettenberg Bay & Knysna
- Golfing at neighbouring Fancourt Golf Estate & George Golf Club
- Breathtaking scenery from the Map of Africa viewpoint
- Wilderness National Park & George Botanical Gardens
- Quick access to the N2 highway & George Airport
- Nearby schools include Glenwood House, Outeniqua & York High
- Nelson Mandela University George Campus is also in easy reach



SOUTHFORK APARTMENTS

2-bedroom apartments from R2,095 million | Sectional title | No transfer duty

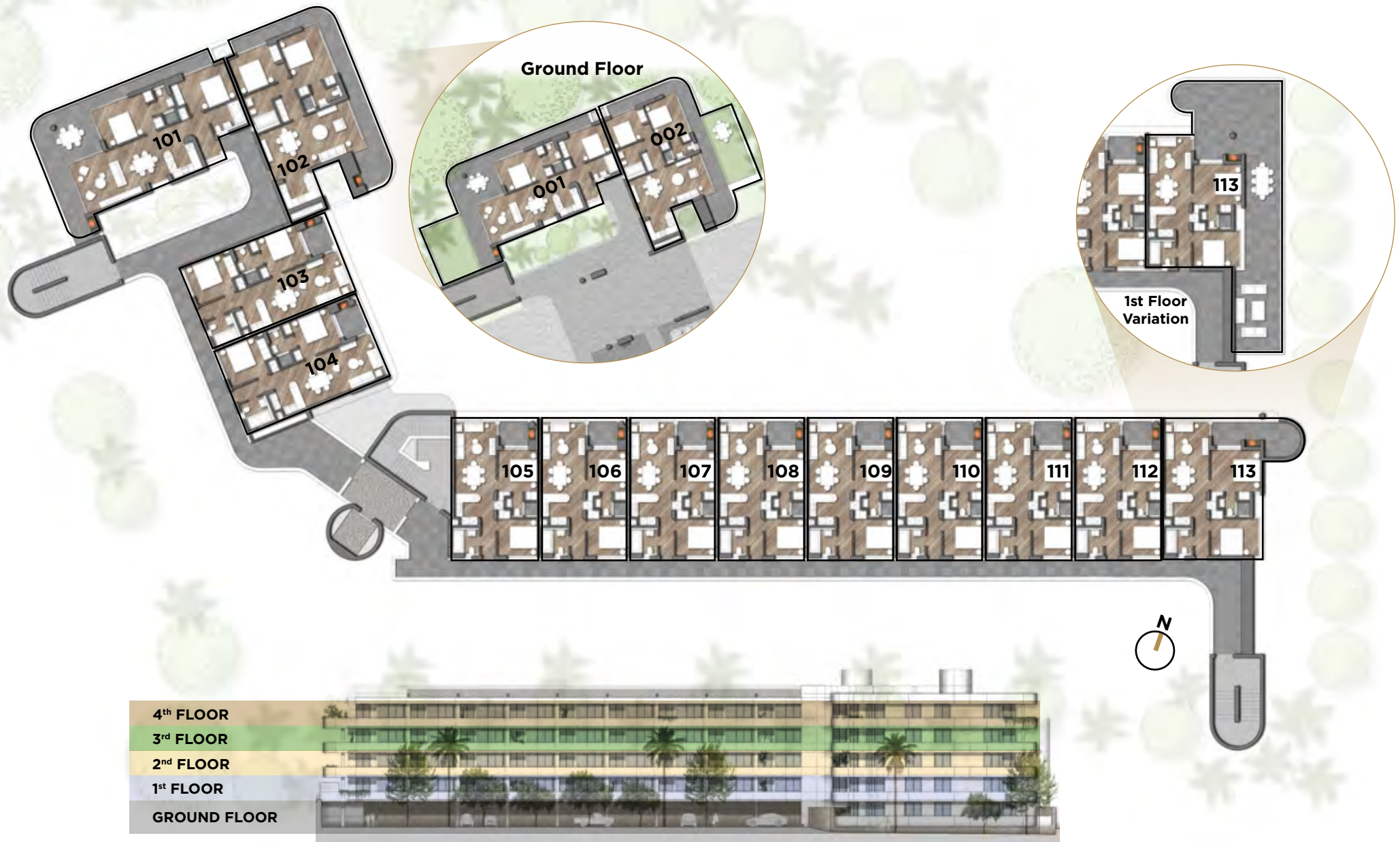
Generously designed to provide ample living space, these spacious apartments at Arbour Nature Estate are ideal for small families, couples, or individuals seeking luxurious and comfortable living. Apartment sizes start at 60m² and go up to 130m², offering a range of features for your convenience, including a balcony and private braai area, a study area, pre-installed WiFi, and two secure parking bays.





southfork

SOUTHFORK APARTMENTS | PHASE 1





SOUTHFORK APARTMENT INTERIOR AND BALCONY

Our apartments feature a flowing open plan and a braai, and are perfectly suited for entertainment and relaxation.


SIGNATURA

APARTMENTS PRICE LIST
CLICK HERE TO VIEW

SOPHISTICATED APARTMENT FINISHES

These apartments include elegant finishes, from herringbone vinyl floors to matte charcoal slip-resistant tiles in the shower and on the balcony. Black LED track spotlights and downlighters create a warm ambience while the well-appointed kitchen includes Crema Sardo polished granite worktops with matching granite splashbacks. The kitchen and bathroom feature high-quality Hans Grohe taps, mixers, and shower fittings.




arbour
NATURE ESTATE



TYPE C HOUSE INTERIOR

ARBOUR HOUSES

Arbour Nature Estate offers a range of elegant homes with thoughtful features and designs that cater to various lifestyles. With three distinct house types to choose from, all boasting elegant finishes and well-lit spaces, you can find your perfect fit. Whether you're seeking spacious single-storey living, a cosy double-storey abode, or a super-luxury contemporary residence, Arbour Nature Estate has the ideal home for you. Explore our selection of 3-bedroom houses, each designed to provide comfort and convenience, and make your dream of living in George a gorgeous reality.



ELEGANT HOMES WITH MODERN COMFORTS

The kitchens in the Type A Simplex and Type B Duplex shine with pale grey finishes and speckled grey polished Sardo granite worktops – with matching granite splashbacks. The Type C Duplex features richly coloured flooring, premium black granite surfaces and charcoal grey kitchen cupboards. All bathrooms feature well-lit mirrors and Hans Grohe taps, mixers, and shower fittings, adding a touch of luxury to these splendid houses.



ARBOUR HOUSE TYPE A SIMPLEX

3-bedroom houses from R3,2 million

These stylish single-storey houses on erf sizes ranging from 361m² to 412m², provide ample space for families or individuals seeking a spacious, beautifully appointed home. They include three bedrooms, a cosy fireplace, a private braai area, and a secure double garage. Pre-installed WiFi offers convenient and affordable connectivity.





TYPE B BEDROOM



TYPE B BACK YARD



TYPE B HOUSE INTERIOR / EXTERIOR



ARBOUR HOUSE TYPE B DUPLEX

3-bedroom houses from R2,895 million

These double-storey houses have been built on plots ranging from 216m² to 229m². Perfectly suited to first-time buyers, young couples, or families, they feature three bedrooms for added comfort, an additional study area, a private braai area, two single garages, and pre-installed WiFi, ensuring a comfortable and connected lifestyle.





ARBOUR HOUSE TYPE C DUPLEX

3-bedroom houses from R3,7 million

This double-storey design is the most exclusive home is set on an erf of 346m2, this top-of-the-line contemporary residence offers enhanced styling and luxury features. Ideal for buyers seeking a well-appointed, spacious home, it features three bedrooms, an additional study area, a cosy fireplace, a private braai area, a secure double garage, and pre-installed WiFi. The yard can be converted into a bedroom, potentially making this a four-bedroom home.



TYPE C HOUSE BACK YARD

ARBOUR HOUSES



- HOUSE TYPE A SIMPLEX
- HOUSE TYPE B DUPLEX
- HOUSE TYPE C DUPLEX



TYPE A SIMPLEX

Single Storey



GROUND FLOOR

111m² Internal Area
44m² Double Garage
18m² Veranda

173m² TOTAL BUILT AREA

TYPE B DUPLEX

Double Storey



GROUND FLOOR

54m² Internal Area
40m² Garages
11m² Veranda

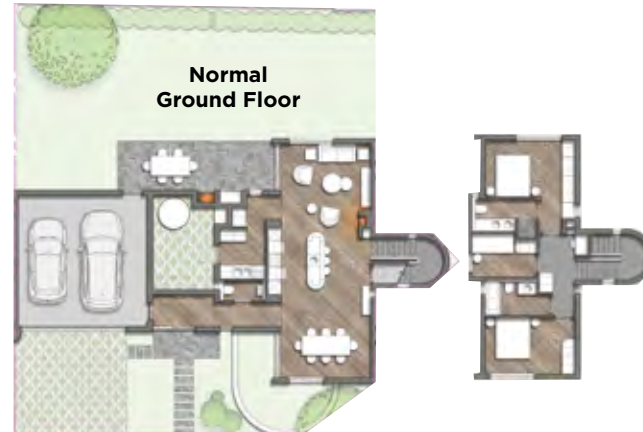
FIRST FLOOR

58m² Built Area

163m² TOTAL BUILT AREA

TYPE C DUPLEX

Double Storey



**Four
Bedroom Option**



GROUND FLOOR

82m² Internal Area
42m² Double Garage
16m² Veranda
4m² Doorstep

FIRST FLOOR

61m² Internal Area

205m² TOTAL BUILT AREA

ARBOUR HOUSE TYPES

HOUSES PRICE LIST
CLICK HERE TO VIEW



INVEST WITH THE CAPE'S LEADING LUXURY DEVELOPERS

Arbour Nature Estate is being developed by Signatura, John Rabie's private label development brand. John co-founded the Rabie Property Group in the late 1970s. Under his visionary leadership, the company has developed hundreds of successful residential projects as well as several large mixed-use estates like Century City, an award-winning 250-hectare New Urban precinct.

In 2012, John launched Signatura, concentrating initially on bespoke residential developments in Cape Town's City Bowl and Atlantic Seaboard, but soon diversifying into large-scale, mixed-use buildings offering world-class luxury, outstanding architecture and intelligent lifestyle design.

Signatura has a proven record when it comes to developments on the Garden Route, with Le Jardin and The Meadows in George, Mossel Cove in Mossel Bay, and Seahorse in Knysna all having been stand-out successes.

In addition to developing property, Signatura also provides a number of follow-on services for its investors. Signatura Rentals provides long-term tenant acquisition and management services. Bunny Digital, a building-integrated internet service provider, provides the fastest and easiest way for owners and tenants to access high-speed, low-cost connectivity. And Perch Short Stays provides short-term letting management - at disruptively affordable fees.





NATIONAL ENQUIRIES

MICHAEL MCELHONE
064 756 4960
michael@signatura.biz

QUINTIN HARRIS
060 799 0241
quintin@signatura.biz



www.signatura.biz/arbournature-estate

Disclaimer: All computer-generated artist's impressions of Arbour Nature Estate are indicative only and should not be regarded as literal representations of the finished development.

